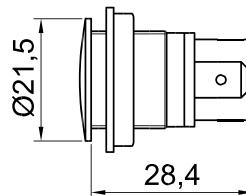
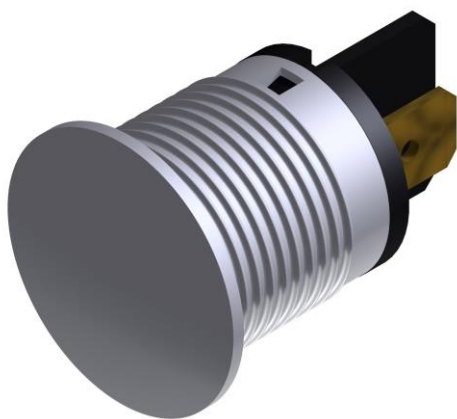




SLIM S.r.l.

Via dei Tigli, 14/16 (Z.I.)
20853 - Biassono (Monza Brianza) - Italy
commerciale@slim.it
www.slim.it

CODE: **SPOTLIGHT TBF/018/CFK**



LED SDM Light indicator with front panel's connection

AC/DC working without the need of any polarization of the signal

It can be supplied with mounted or separated nut

Lamps	LED SDM
Working Voltage	12V • 230V
Working temperature	120°C Max
Hole diameter	18mm
Recommended thickness panel	from 0,5mm to 5mm
Method of connection to the panel	with nut
Type of connection	male faston6,3x0,8mm • male faston4,8x0,8mm
Type of lens	CFK

Lenses available

