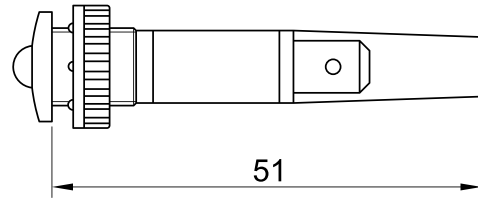
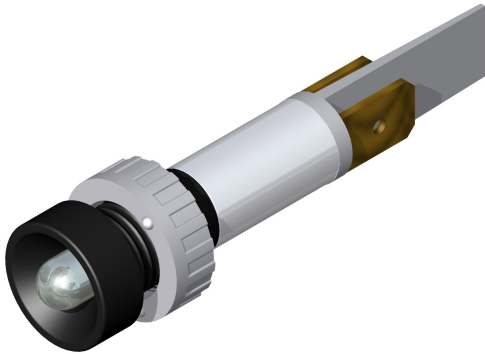




**SLIM S.r.l.**

Via dei Tigli, 14/16 (Z.I.)  
20853 - Biassono (Monza Brianza) - Italy  
[commerciale@slim.it](mailto:commerciale@slim.it)  
[www.slim.it](http://www.slim.it)

CODE: **LDF/010**



LED light indicator with front panel's connection

The color of the LED light is identified by the partition between the 2 faston

AC/DC working without the need of any polarization of the signal

It can be supplied with mounted or separated nut

Lamps	LED
Working Voltage	2V • 6V • 12V • 24V • 48V • 110V • 250V • 400V
Working temperature	120°C Max
Hole diameter	10mm
Recommended thickness panel	from 0,5mm to 5mm
Method of connection to the panel	with nut
Type of connection	male faston 6,3x0,8mm • male faston 4,8x0,8mm
Wire ends	on request
Type of lens	010/01 • 010/02 • 010/03
Color's lens	Black or chromium plated lens

Lenses available

